

Self-propelled articulated boom lift (diesel) :: JLG 510 AJ

SPECIFICATION

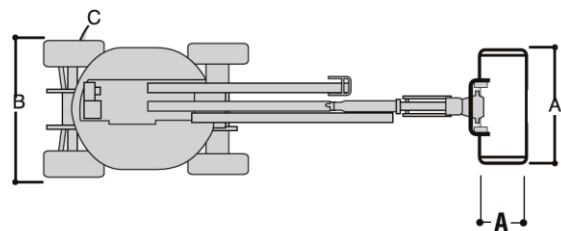
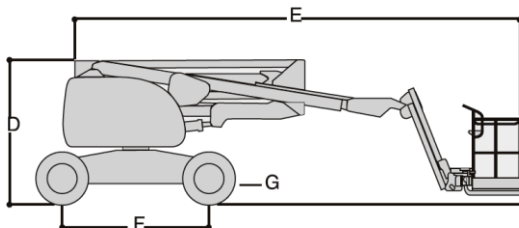
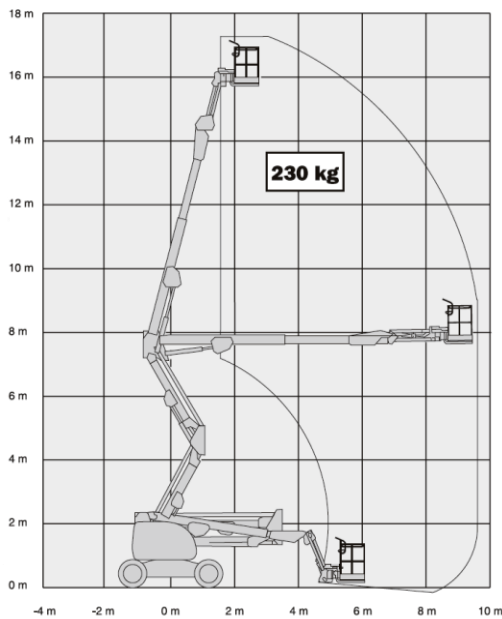


Reach:	
Platform Height	15.81 m
Work Height	17.81m
Horizontal Reach	9.48 m
Up and Over Height	7.63 m
Turntable Rotation	360° (Non continuous)
Platform Capacity Unrestricted	230 kg
Platform Rotator	180° Hydraulic
Jib - Overall Length	1.24 m
Jib - Range of Articulation	145° (+78, -67)

Dimensions:	
A. Platform Size	0.76 x 1.83 m
B. Overall Width with	2.34 m
C. Tailswing (working condition)	Zero
D. Stowed Height	2.26 m
E. Stowed Length	7.68 m
F. Wheelbase	2.34 m
G. Ground Clearance	36 cm
Gross Vehicle Weight	7,650 kg
Maximum Ground Bearing Pressure	5.7 kg/cm ²

Chassis:	
Drive Speed 4WD	7.2 km/h
Gradeability 4WD	45%
Tyres	12 x 16.5
Tyre Type	Foam Filled
Axle Oscillation (standard)	20.3 cm
Turning Radius - Inside / Outside	2 m / 5 m

Power Source:	
<i>Diesel Engine</i>	
Perkins 404C-22	35 kW
Fuel Tank Capacity	62.5 l
Hydraulic Reservoir	113.6 l
Auxiliary Power	12V DC



This brochure is for illustrative purpose only and based on the latest information at the time of printing. The manufacturer reserves the right to make changes the specifications, standard and optional equipment at any time, without prior notice.